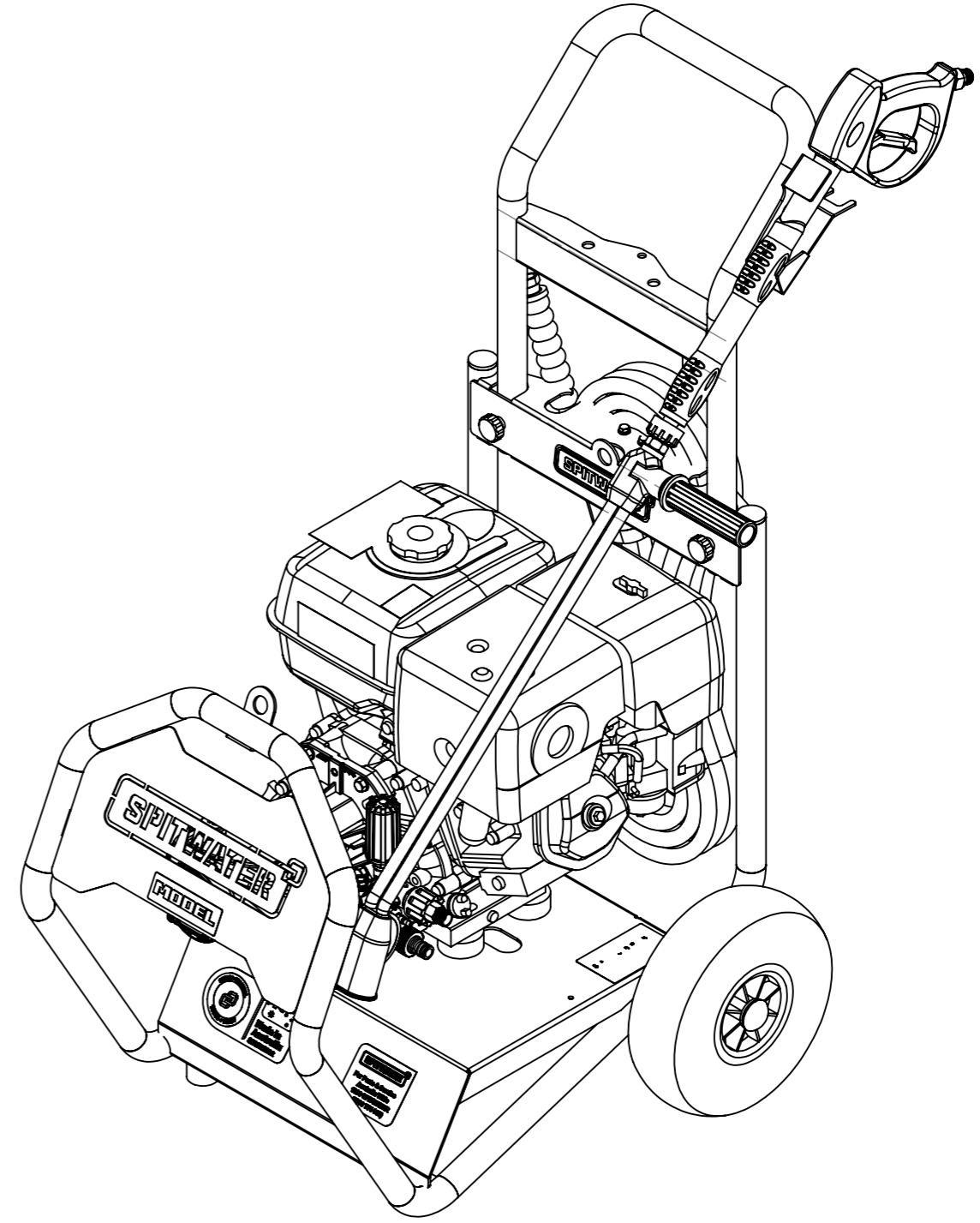


PROPRIETARY, CONFIDENTIAL AND COMPLIANCE: THE INFORMATION CONTAINED IN THIS DRAWING IS THE SOLE PROPERTY OF OTTICO EQUIPMENT ANY REPRODUCTION IN PART OR AS A WHOLE WITHOUT THE WRITTEN PERMISSION OF SPITWATER AUSTRALIA Pty Ltd. IS PROHIBITED ANY CHANGES REQUIRE ENGINEERING OFFICE APPROVAL PRIOR TO IMPLEMENTATION. IF IN DOUBT - CONSULT YOUR TEAM LEADER OR PRODUCTION MANAGER.

ITEM NO.	PART NUMBER	DESCRIPTION	QTY.
1	74002	FRAME COMPLETE	1
2	47045	300-4 PNEUMATIC WHEEL-BLACK PLASTIC HUB	2
3	70200-P	STANDARD FLAT WASHER 20.50 x 35 x 3	2
4	47044	HUB CAP mm.20	2
5	48894-G	ANTI VIBRATION STUD MOUNT 35x25mm RUBBER M8X1	2
6	48894-F	ANTI VIBRATION STUD MOUNT 50x20mm RUBBER M10X2	4
7	70200-I	FLAT WASHER 10.50 x 21x 1.50	8
8	70051-H	NYLOCK NUT M10 x 1.50 - 6	8
9	48330	PETROL ENGINE 13 HP HONDA GX390 UT2 QXU	1
10	IPP184	E2E2815CV DX H/SHAFT1+F/PETROL+VLVE M22	1
11	70128-F	SOCKET GRUB SCREW M6 x 1.0 x 8	1
12	I96751400	WASHER 21.5X27X1.5	1
13	49237	REDUCER 1/2M BSPP - 3/4M BSPP	1
14	70559-A	TAIL PIECE COMPLETE 3/4F BSPP - SNAP ON W/FILTER	1
15	72043	NIPPLE 1/8"M BSPT - 1/4"F BSPP	1
16	47105	GAUGE BACK/A 63mm 400bar 1/4"M BSPP 60°S	1
17	47400-A	THERMAL VALVE 10BAR 63° C 1/2"M BSPP	1
18	74300	FRONT COVER COMPLETE	1
19	70104-N	SCREW HEXAGONAL HEAD M6 x 1.00 x 25 -4.8	6
20	70210-D	INTERNAL TOOTH LOCK WASHER M 6	8
21	70200-E	FLAT WASHER 6.50 x 13 x 1.20	8
22	20240	SERIAL NUMBER LABEL	1
23	20232-A	100x60 Blank Crystal Clear 76/2500	1
24	48446	PLASTIC PLUG 32mm	2
25	48656	PALLET HP251/A-201SAE-HP201DEH	1
26	44539-G.1	DETERGENT HOSE	1
27	46241	2 STEP PLASTIC DET FILTER 1/4" HOSE BARB	1
28	46239	SPRING HOSE CLAMP 9.3/9.9	1
29	48655	PACKAGING HP251A HP201SAE HP2215DEL	1
30	20242	PACKAGING LABEL	2
31	PACKING BLOCK		4
32	72030	PACKING BRACKETS	4
33	20205	NEW PARTS & SERVICE LABEL	1
34	20241	MODEL LABEL	1
35	20253	NEW SPITWATER LOGO SMALL	1
36	20200	OTTICO ORIGINAL/AUSTRALIAN MADE LABEL	1
37	20273	HONDA AUSTRALIA APPROVED - FUEL CAP STICKER	1
38	20201	CAUTION HOT LABEL 38x38 BLACK/YELLOW	1
39	20272	HONDA AUSTRALIA APPROVED - FUEL CAP STICKER	1
40	74261	HANDLE COMPLETE	1
41	PA26025050	AR1 B M22 3PCS SCREW-TYPE CPL.-3/8M BSP	1
42	46236-A	FASTENING KNOB	2
43	74403	GUN HOLDER COMPLETE	1

ITEM NO.	PART NUMBER	DESCRIPTION	QTY.
44	46608	H/P HOSE 8m 3/8F BSPP-3/8F BSPP	1
45	M392301	DOUBLE LANCE 684mm - M22 X1.5 - 1/4"NPTF	1
46	M4022105010	MV925+MV70+ARF 30l/min 280bar 160°C	1
47	M0124710120	LOW PRESSURE NOZZLE 600 50° 50bar 150°C	1
48	70014-03515	HIGH PRESSURE NOZZLE 1/4"M NPT 035 15°	1
49	74404	HOSE HOLDER COMPLETE	1
50	70104-I	SCREW HEX HEAD M6 x 1.00 x 16 -4.8	2
51	20275	HPC WARNING LABEL BLACK ON YELLOW	1
52	20274	HONDA WARRANTY CARD	1



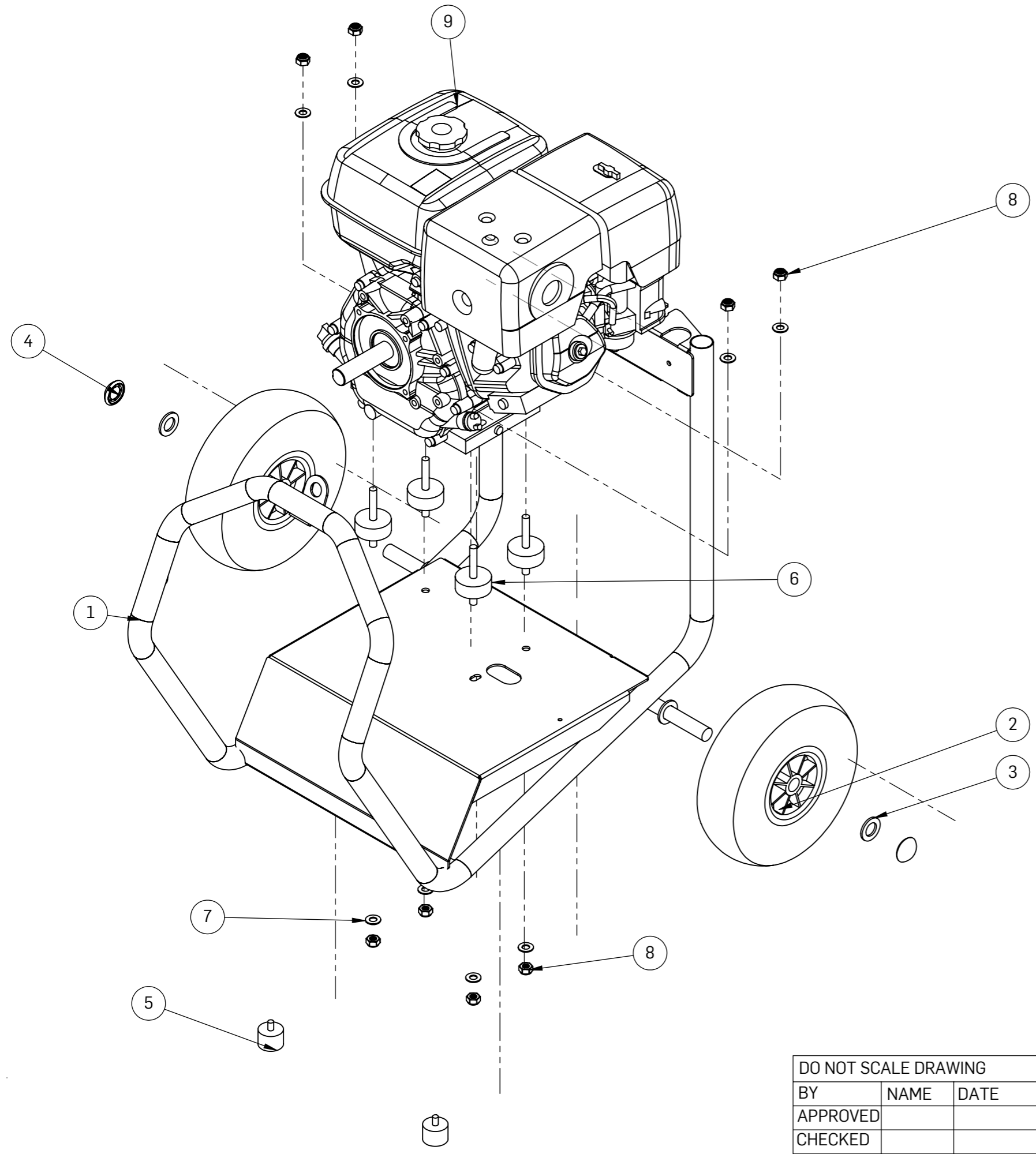
REV.	Serial No:	DESCRIPTION	DATE	APPROVED
A		Approved Release	11/02/2022	

Revision Table

DO NOT SCALE DRAWING		
BY	NAME	DATE
APPROVED		
CHECKED		
DRAWN	Harry	1/03/2022

OTTICO EQUIPMENT
 SPITWATER AUSTRALIA PTY LTD T/A/S OTTICO EQUIPMENT
 953 METRY STREET, ALBURY, NSW 2640, AUS
 02 60257255, enquiries@spitwater.com
 www.spitwater.com.au

DESCRIPTION:	HC15275P 275bar 15l/m 8.2kW HONDA	PART NO:	SCW008
MATERIAL:		Rev:	A
FINISH:		QTY:	
WEIGHT: G		SHEET 1 OF 4	



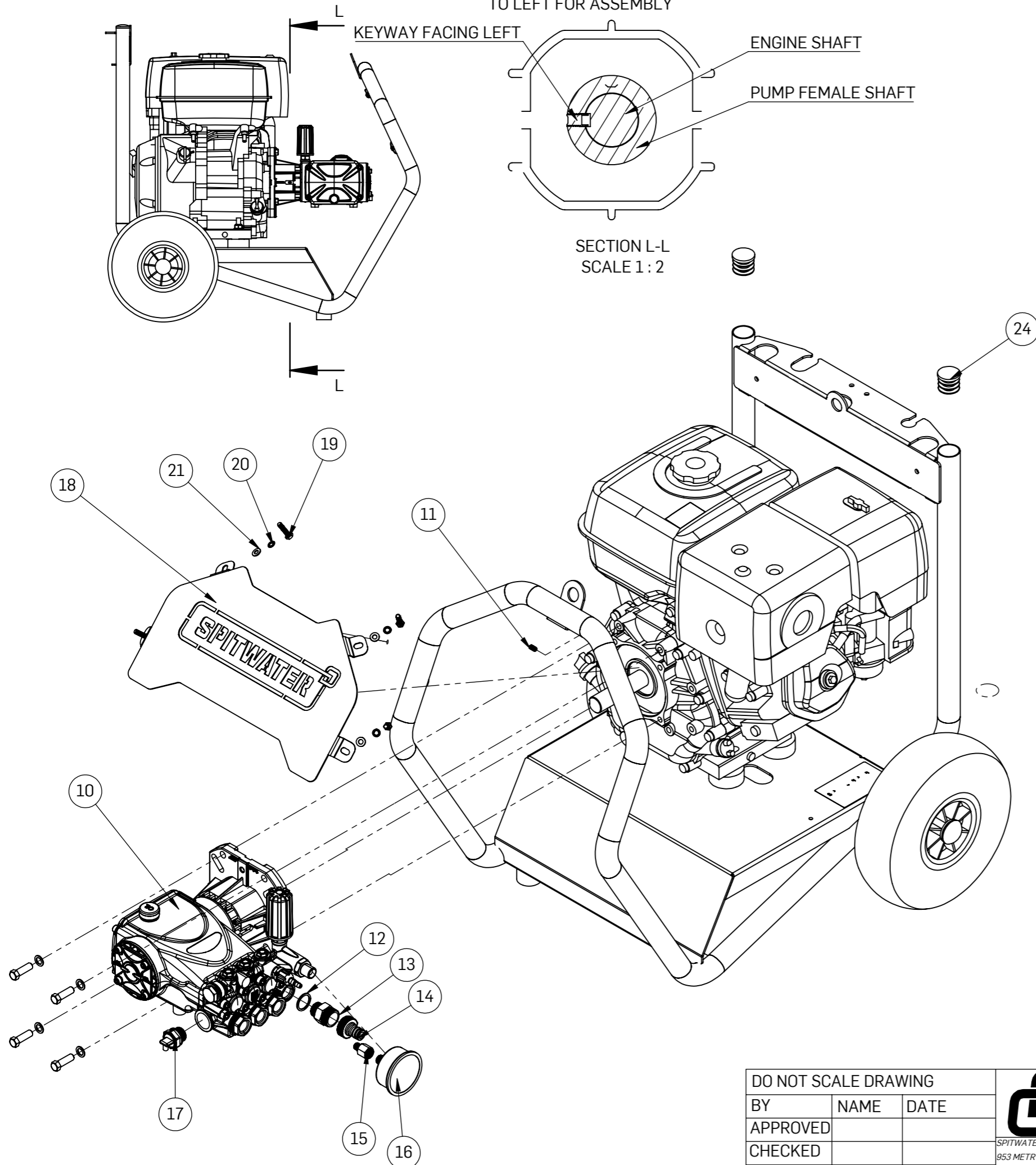
ITEM NO.	PART NUMBER	DESCRIPTION	QTY.
1	74002	FRAME COMPLETE	1
2	47045	300-4 PNEUMATIC WHEEL-BLACK PLASTIC HUB	2
3	70200-P	STANDARD FLAT WASHER 20.50 x 35 x 3	2
4	47044	HUB CAP mm.20	2
5	48894-G	ANTI VIBRATION STUD MOUNT 35x25mm RUBBER M8X1	2
6	48894-F	ANTI VIBRATION STUD MOUNT 50x20mm RUBBER M10X2	4
7	70200-I	FLAT WASHER 10.50 x 21x 1.50	8
8	70051-H	NYLOCK NUT M10 x 1.50 - 6	8
9	48330	PETROL ENGINE 13 HP HONDA GX390 UT2 QXU	1

DO NOT SCALE DRAWING		
BY	NAME	DATE
APPROVED		
CHECKED		
DRAWN	Harry	1/03/2022

OTTICO EQUIPMENT
 SPITWATER AUSTRALIA PTY LTD T/AS OTTICO EQUIPMENT
 953 METRY STREET, ALBURY, NSW 2640, AUS
 02 60257255, enquiries@spitwater.com
 www.spitwater.com.au

DESCRIPTION: HC15275P 275bar 15l/m 8.2kW HONDA	PART NO: SCW008
MATERIAL:	Rev: A
FINISH:	QTY:
WEIGHT: G	SHEET 2 OF 4

ALGIN ENGINE AND PUMP KEYWAY TO LEFT FOR ASSEMBLY



ITEM NO.	PART NUMBER	DESCRIPTION	QTY.
1	74002	FRAME COMPLETE	1
2	47045	300-4 PNEUMATIC WHEEL-BLACK PLASTIC HUB	2
3	70200-P	STANDARD FLAT WASHER 20.50 x 35 x 3	2
4	47044	HUB CAP mm.20	2
5	48894-G	ANTI VIBRATION STUD MOUNT 35x25mm RUBBER M8X1	2
6	48894-F	ANTI VIBRATION STUD MOUNT 50x20mm RUBBER M10X2	4
7	70200-I	FLAT WASHER 10.50 x 21x 1.50	8
8	70051-H	NYLOCK NUT M10 x 1.50 - 6	8
9	48330	PETROL ENGINE 13 HP HONDA GX390 UT2 QXU	1
10	IPP184	E2E2815CV DX H/SHAFT1+F/PETROL+VLVE M22	1
11	70128-F	SOCKET GRUB SCREW M6 x 1.0 x 8	1
12	I96751400	WASHER 21.5X27X1.5	1
13	49237	REDUCER 1/2M BSPP - 3/4M BSPP	1
14	70559-A	TAIL PIECE COMPLETE 3/4F BSPP - SNAP ON W/FILTER	1
15	72043	NIPPLE 1/8" M BSPT - 1/4" F BSPP	1
16	47105	GAUGE BACK/A 63mm 400bar 1/4" M BSPP 60°S	1
17	47400-A	THERMAL VALVE 10BAR 63° C 1/2" M BSPP	1
18	74300	FRONT COVER COMPLETE	1
19	70104-N	SCREW HEXAGONAL HEAD M6 x 1.00 x 25 -4.8	4
20	70210-D	INTERNAL TOOTH LOCK WASHER M 6	4
21	70200-E	FLAT WASHER 6.50 x 13 x 1.20	4
22	20240	SERIAL NUMBER LABEL	1
23	20232-A	100x60 Blank Crystal Clear 76/2500	1
24	48446	PLASTIC PLUG 32mm	2

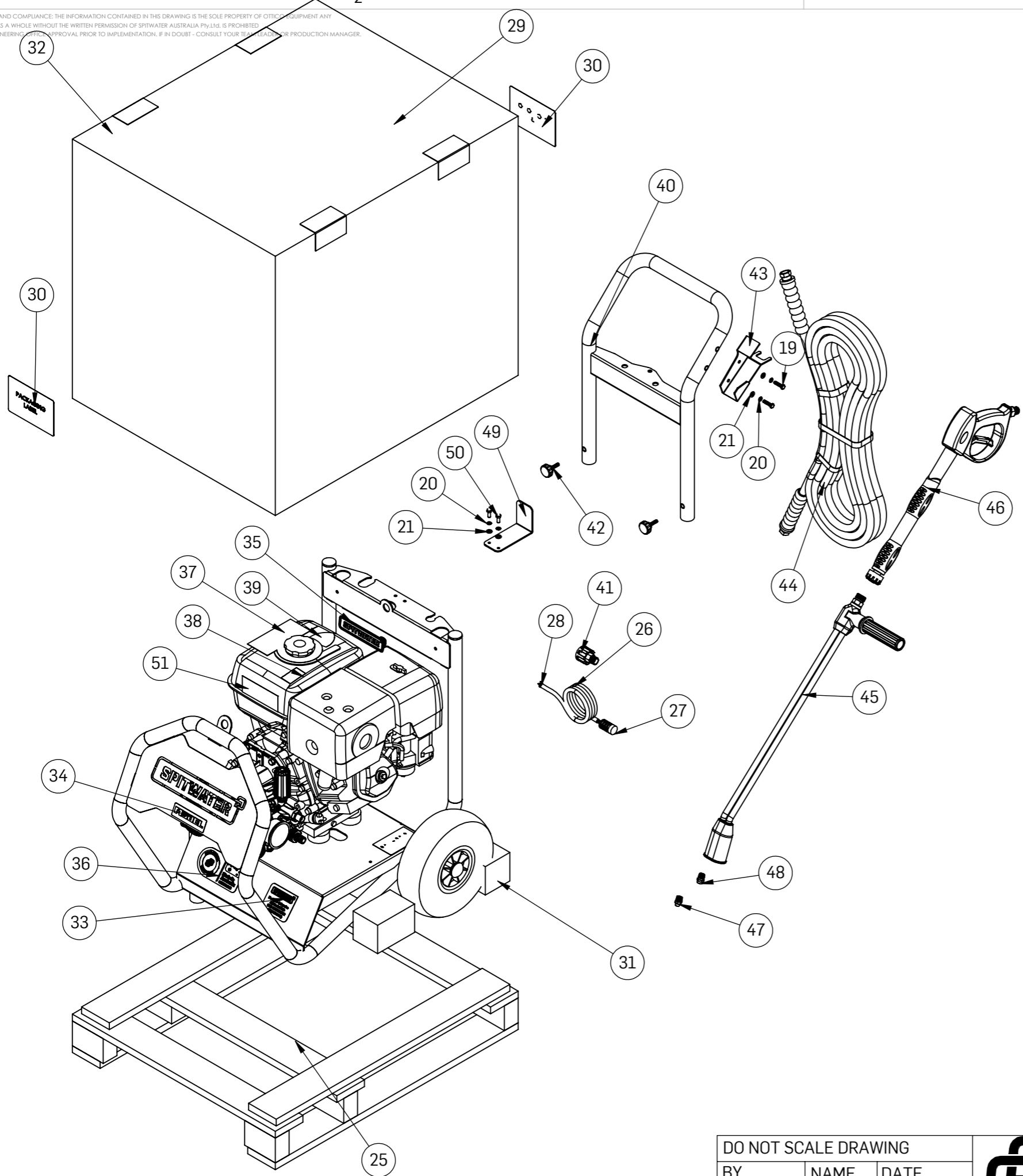
DO NOT SCALE DRAWING		
BY	NAME	DATE
APPROVED		
CHECKED		
DRAWN	Harry	1/03/2022

OTTICO EQUIPMENT
 SPITWATER AUSTRALIA PTY LTD T/AS OTTICO EQUIPMENT
 953 METRY STREET, ALBURY, NSW 2640, AUS
 02 60257255, enquiries@spitwater.com
 www.spitwater.com.au

DESCRIPTION:	HC15275P 275bar 15l/m 8.2kW HONDA
MATERIAL:	
FINISH:	
WEIGHT: G	

PART NO:	SCW008
Rev:	A
QTY:	
SHEET	3 OF 4

PROPRIETARY, CONFIDENTIAL AND COMPLIANCE: THE INFORMATION CONTAINED IN THIS DRAWING IS THE SOLE PROPERTY OF OTTICO EQUIPMENT ANY REPRODUCTION IN PART OR AS A WHOLE WITHOUT THE WRITTEN PERMISSION OF SPITWATER AUSTRALIA PTY LTD. IS PROHIBITED. ANY CHANGES REQUIRE ENGINEERING APPROVAL PRIOR TO IMPLEMENTATION. IF IN DOUBT - CONSULT YOUR TEAM LEADER OR PRODUCTION MANAGER.



ITEM NO.	PART NUMBER	DESCRIPTION	QTY.
1	74002	FRAME COMPLETE	1
2	47045	300-4 PNEUMATIC WHEEL-BLACK PLASTIC HUB	2
3	70200-P	STANDARD FLAT WASHER 20.50 x 35 x 3	2
4	47044	HUB CAP mm.20	2
5	48894-G	ANTI VIBRATION STUD MOUNT 35x25mm RUBBER M8X1	2
6	48894-F	ANTI VIBRATION STUD MOUNT 50x20mm RUBBER M10X2	4
7	70200-I	FLAT WASHER 10.50 x 21x 1.50	8
8	70051-H	NYLOCK NUT M10 x 1.50 - 6	8
9	48330	PETROL ENGINE 13 HP HONDA GX390 UT2 QXU	1
10	IPP184	E2E2815CV DX H/SHAFT1+F/PETROL+VLVE M22	1
11	70128-F	SOCKET GRUB SCREW M6 x 1.0 x 8	1
12	I96751400	WASHER 21.5X27X1.5	1
13	49237	REDUCER 1/2M BSPP - 3/4M BSPP	1
14	70559-A	TAIL PIECE COMPLETE 3/4F BSPP - SNAP ON W/FILTER	1
15	72043	NIPPLE 1/8"M BSPT - 1/4"F BSPP	1
16	47105	GAUGE BACK/A 63mm 400bar 1/4"M BSPP 60°S	1
17	47400-A	THERMAL VALVE 10BAR 63° C 1/2"M BSPP	1
18	74300	FRONT COVER COMPLETE	1
19	70104-N	SCREW HEXAGONAL HEAD M6 x 1.00 x 25 -4.8	6
20	70210-D	INTERNAL TOOTH LOCK WASHER M 6	8
21	70200-E	FLAT WASHER 6.50 x 13 x 1.20	8
22	20240	SERIAL NUMBER LABEL	1
23	20232-A	100x60 Blank Crystal Clear 76/2500	1
24	48446	PLASTIC PLUG 32mm	2
25	48656	PALLET HP251/A-201SAE-HP201DEH	1
26	44539-G.1	DETERGENT HOSE	1
27	46241	2 STEP PLASTIC DET FILTER 1/4" HOSE BARB	1
28	46239	SPRING HOSE CLAMP 9.3/9.9	1
29	48655	PACKAGING HP251A HP201SAE HP2215DEL	1
30	20242	PACKAGING LABEL	2
31	PACKING BLOCK		4
32	72030	PACKING BRACKETS	4
33	20205	NEW PARTS & SERVICE LABEL	1
34	20241	MODEL LABEL	1
35	20253	NEW SPITWATER LOGO SMALL	1
36	20200	OTTICO ORIGINAL/AUSTRALIAN MADE LABEL	1
37	20273	HONDA AUSTRALIA APPROVED - FUEL CAP STICKER	1
38	20201	CAUTION HOT LABEL 38x38 BLACK/YELLOW	1
39	20272	HONDA AUSTRALIA APPROVED - FUEL CAP STICKER	1
40	74261	HANDLE COMPLETE	1
41	PA26025050	AR1 B M22 3PCS SCREW-TYPE CPL.-3/8M BSP	1
42	46236-A	FASTENING KNOB	2
43	74403	GUN HOLDER COMPLETE	1
44	46608	H/P HOSE 8m 3/8F BSPP-3/8F BSPP	1
45	M392301	DOUBLE LANCE 684mm - M22 X1.5 - 1/4"NPTF	1
46	M4022105010	MV925+MV70+ARF 30l/min 280bar 160°C	1
47	M0124710120	LOW PRESSURE NOZZLE 600 50° 50bar 150°C	1
48	70014-03515	HIGH PRESSURE NOZZLE 1/4"M NPT 035 15°	1
49	74404	HOSE HOLDER COMPLETE	1
50	70104-I	SCREW HEX HEAD M6 x 1.00 x 16 -4.8	2
51	20275	HPC WARNING LABEL BLACK ON YELLOW	1
52	20274	HONDA WARRANTY CARD	1

DO NOT SCALE DRAWING		
BY	NAME	DATE
APPROVED		
CHECKED		
DRAWN	Harry	1/03/2022

OTTICO EQUIPMENT
 SPITWATER AUSTRALIA PTY LTD T/AS OTTICO EQUIPMENT
 953 METRY STREET, ALBURY, NSW 2640, AUS
 02 60257255, enquiries@spitwater.com
 www.spitwater.com.au

DESCRIPTION: HC15275P 275bar 15l/m 8.2kW HONDA	PART NO: SCW008
MATERIAL:	Rev: A
FINISH:	QTY:
WEIGHT: G	SHEET 4 OF 4